

HOUSE TYPE F-E-D - SITE NO.'s 53-56 & 108-111



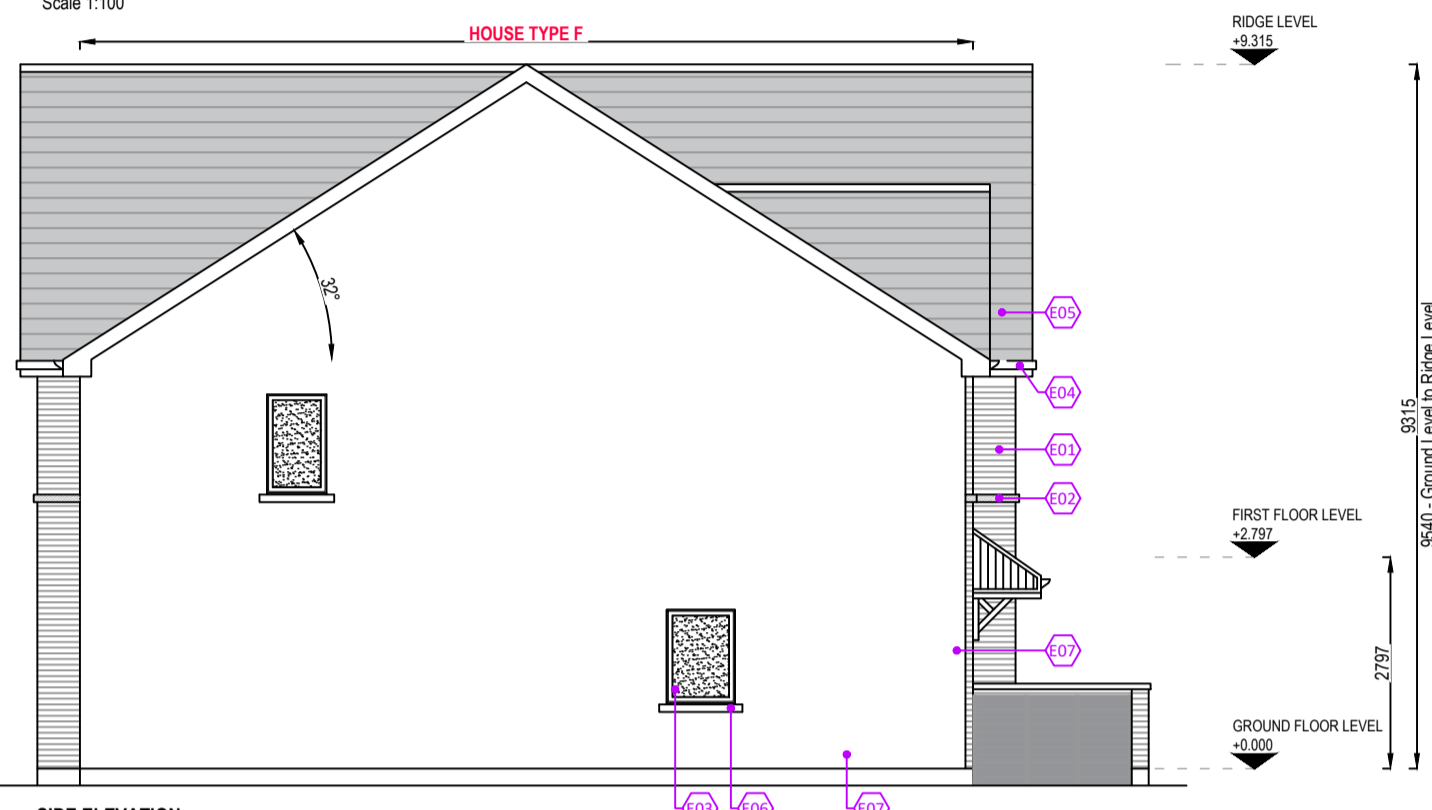
FRONT ELEVATION  
Scale 1:100



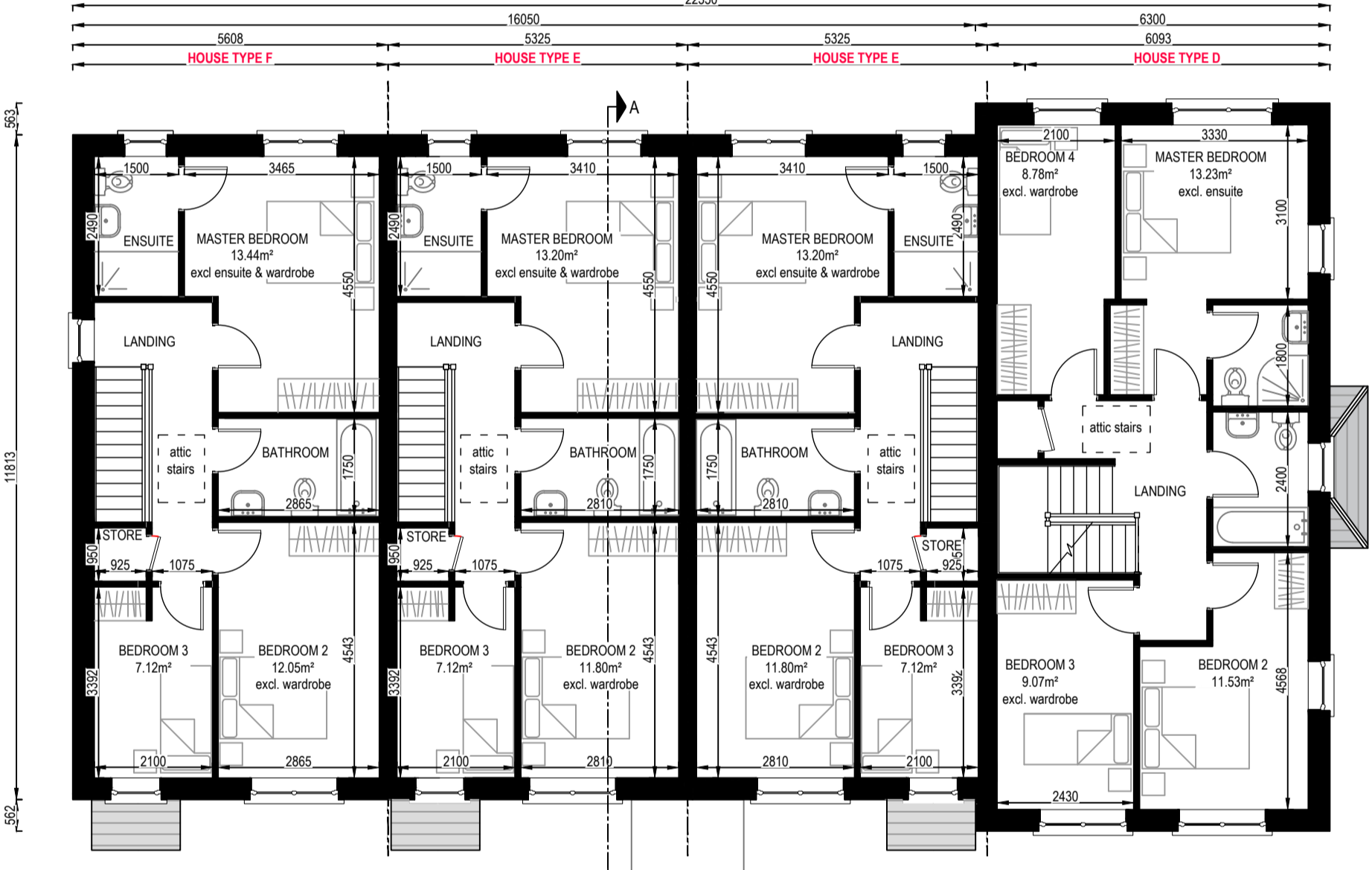
SIDE (DUAL FRONTAGE) ELEVATION  
Scale 1:100



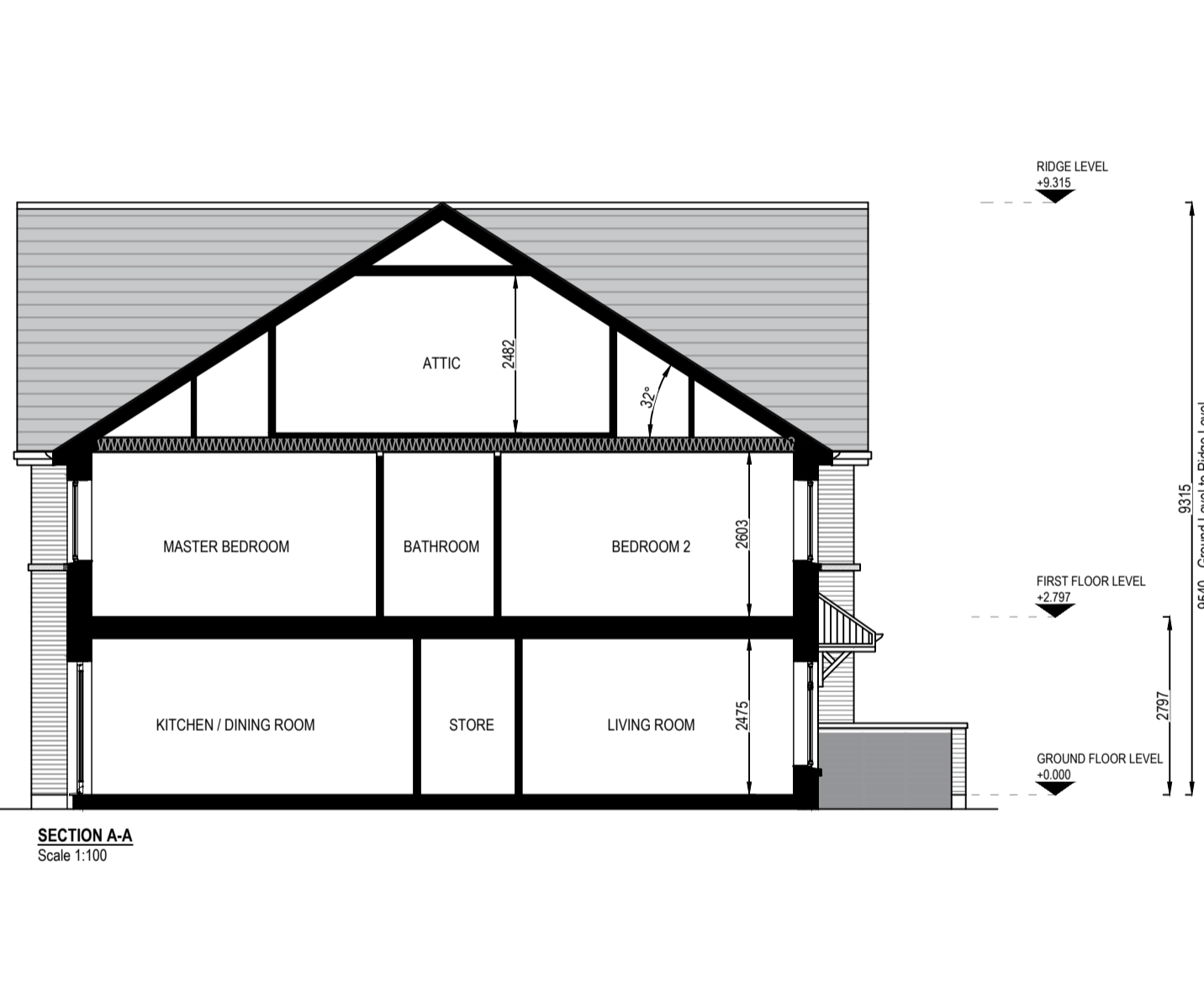
REAR ELEVATION  
Scale 1:100



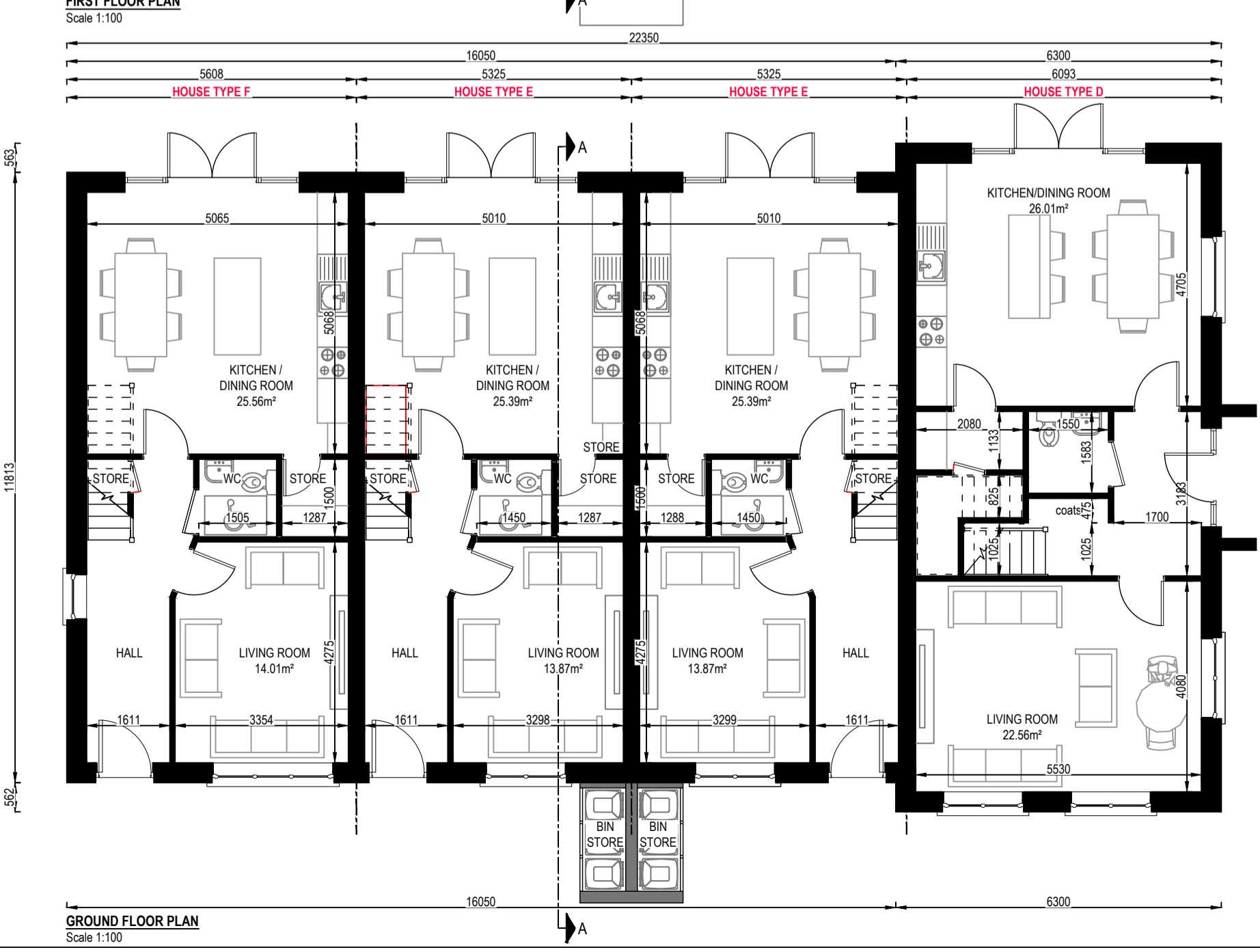
SIDE ELEVATION  
Scale 1:100



FIRST FLOOR PLAN  
Scale 1:100



SECTION A-A  
Scale 1:100



GROUND FLOOR PLAN  
Scale 1:100

FOR FINISHED FLOOR LEVELS - SEE DWG NO.'s 24004-A-112 & 113

Required	House Type E	House Type F
Ground Floor Area	55.32m <sup>2</sup>	55.71m <sup>2</sup>
First Floor Area	55.32m <sup>2</sup>	55.71m <sup>2</sup>
Gross Floor Area	110.64m <sup>2</sup>	111.42m <sup>2</sup>
Min. Main Living Room	13m <sup>2</sup>	14.51m <sup>2</sup>
Aggregate Living Area	39.26m <sup>2</sup>	39.57m <sup>2</sup>
Bedroom 1	13m <sup>2</sup>	13.44m <sup>2</sup>
Bedroom 2	11.44m <sup>2</sup>	12.05m <sup>2</sup>
Bedroom 3	7.1m <sup>2</sup>	7.12m <sup>2</sup>
Aggregate Bedroom Area	32m <sup>2</sup>	32.43m <sup>2</sup>
Storage incl. ext. wardrobe	5m <sup>2</sup>	5.42m <sup>2</sup>

Required	House Type D
Ground Floor Area	67.28m <sup>2</sup>
First Floor Area	67.28m <sup>2</sup>
Gross Floor Area	134.56m <sup>2</sup>
Min. Main Living Room	15m <sup>2</sup>
Aggregate Living Area	40m <sup>2</sup>
Bedroom 1	13m <sup>2</sup>
Bedroom 2	11.44m <sup>2</sup>
Bedroom 3	7.1m <sup>2</sup>
Bedroom 4	7.1m <sup>2</sup>
Aggregate Bedroom Area	38m <sup>2</sup>
Storage incl. ext. wardrobe	6m <sup>2</sup>

0 1:00 5m

**COPYRIGHT**  
THIS DOCUMENT AND ALL DATA CONTAINED HEREIN REMAIN THE PROPERTY OF O'DALY ARCHITECTS. IT IS SUPPLIED IN CONFIDENCE FOR EVALUATION PURPOSES ONLY UNDER THE CONDITION THAT SAME IS NOT USED, REPRODUCED OR TRANSMITTED IN ANY WAY TO OTHERS WITHOUT WRITTEN CONSENT.

**COPYRIGHT**  
UNLESS OTHERWISE STATED, DIMENSIONS SHOWN ARE IN MILLIMETRES. NO DIMENSIONS TO BE SCALED FROM THIS DRAWING. ALL DIMENSIONS TO BE CHECKED BY THE CONTRACTOR ON SITE AND ANY DISCREPANCIES TO BE REPORTED TO THE ARCHITECT.

**Key Plan**  
Scale 1:5000

TAG NO.	ELEVATION TAG NOTE
E01	Red brick finish
E02	Limestone sills, surrounds & string course on brick elevations
E03	A-rated uPVC windows & composite front door
E04	Selected fascia, soffit & rainwater goods
E05	Black concrete roof tile complete with continuous dry verge & dry ridge systems
E06	Prestressed concrete sills to dashed elevations
E07	Dry dash finish

THIS DRAWING SHOULD BE READ IN CONJUNCTION WITH THE HOUSING QUALITY ASSESSMENT SCHEDULE DOCUMENT REF. 24004-AR-HQA

**o'daly architects**  
1st Floor - Unit 13(B) - Mullaghboy Industrial Estate  
Navan - County Meath - Tel: (046) 9021233  
Mobile: (087) 0525233 - Email: ivan@odaly.ie

**RIA** Registered Architect 2026  
**RIA** Practice Member 2026

**Client:**  
Loughglinn Developments Ltd.

**Project Name and Address:**  
Proposed Large Residential Development (LRD) at "Crowspark 1st Division", Kildarey Road, Trm, County Meath.

**Project Stage:**  
Planning

**Drawing Name:**  
House Type F - E - D  
3 Bedroom, 2 Storey, Mid & End Terraced Houses with 4 Bedroom, 2 Storey, Dual Frontage, End Terrace House  
Site No.'s 53-56 & 108-111

**Drawn By:**  
iod

**Scale:**  
as shown @ A1

**Checked By:**  
iod

**Date:**  
04.06.2026

**Drawing Number:**  
24004-AR-208

**Revision:**  
P01



ARTISTS IMPRESSION